

**DISTRETTO 1** (comprendente i comuni di Castelforte, Santi Cosma e Damiano, Minturno e Spigno Saturnia):

**Punti Presa caccia al cinghiale in braccata:**

**Punto presa n.1** “Vallelonga” di Ha 519 - (Castelforte);

**Punto presa n. 2** “Valle di Suio” di Ha 563 – (Castelforte);

**Punto presa n.3** “Pozzari” di Ha 590 – (Castelforte);

**Punto presa n.4** “Macchianera” di Ha 316 - (Minturno), “Cerri Aprano” di Ha 184, “Ventosa” di Ha 40 - (Santi Cosma e Damiano) ;

**Punto presa n.5** “Pulcherini” di Ha 176, “Sollacciano” di Ha 133 (Minturno), “Capodacqua” di Ha. 193 (Spigno Saturnia).

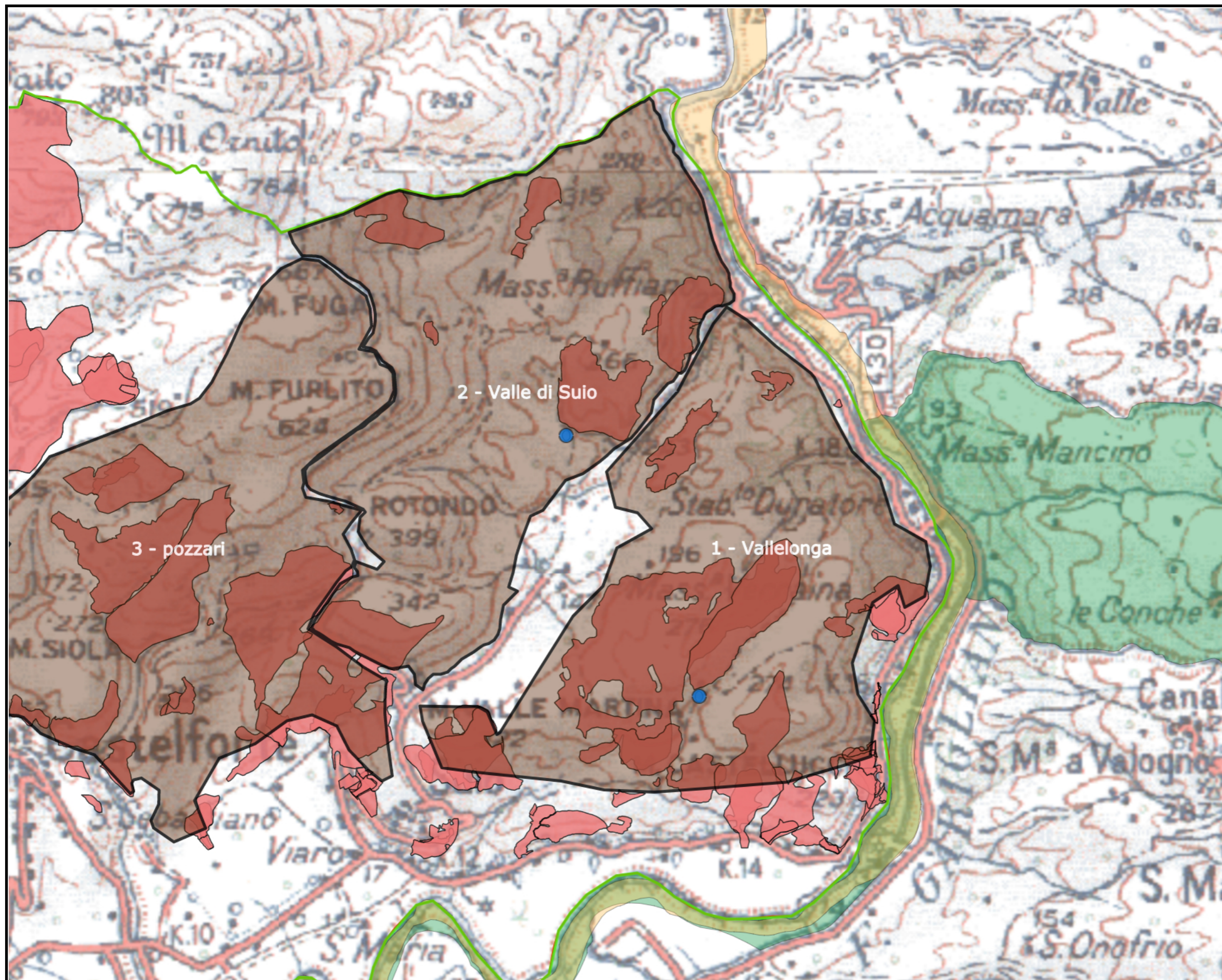
**Punti Presa caccia al cinghiale in girata e aree di selezione:**

Sono confermate le zone di selezione del Comune di Castelforte istituite con il provvedimento n° 331/UP del 10/07/2019.





# SISTEMA INFORMATIVO ATC LATINA 2



## Legenda

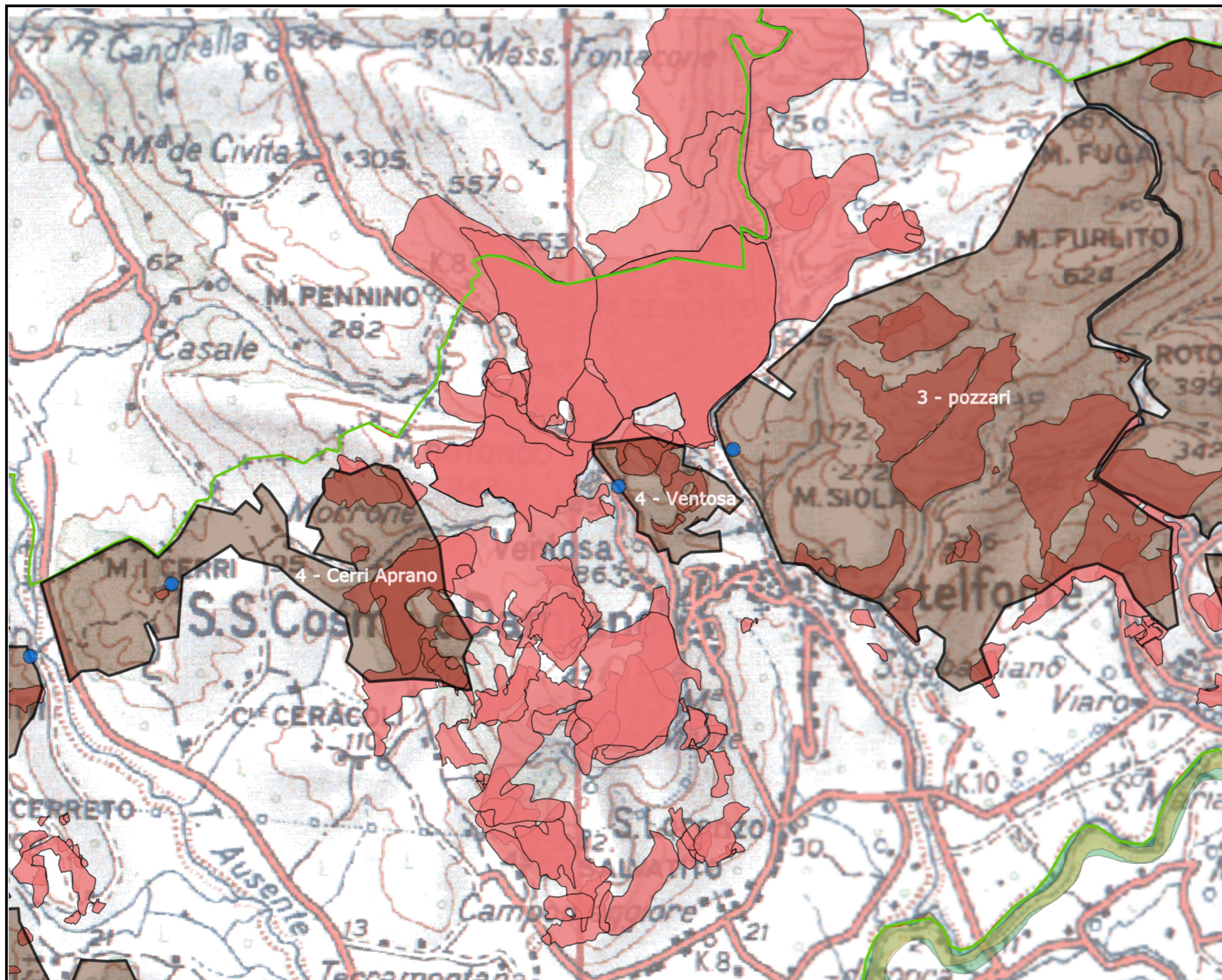
- IBA
- RAMSAR
- EUAP (PARCHI)
- ZPS
- SIC-ZSC
- CONFINI
- ZRV
- Zone Caccia Selezione
- Zona Girata
- Parco Naturale Regionale
- Incendi 2009
- Incendi 2010
- Incendi 2011
- Incendi 2012
- Incendi 2013
- Incendi 2014
- Incendi 2015
- Incendi 2016
- Incendi 2017
- Incendi 2018
- Distretto 4
- Distretto 3
- Distretto 2
- Distretto 1
- Aree ritrovo
- Aree cinghiali
- Punti di ritrovo

Scala 1:25.000




























# SISTEMA INFORMATIVO ATC LATINA 2



## Legenda

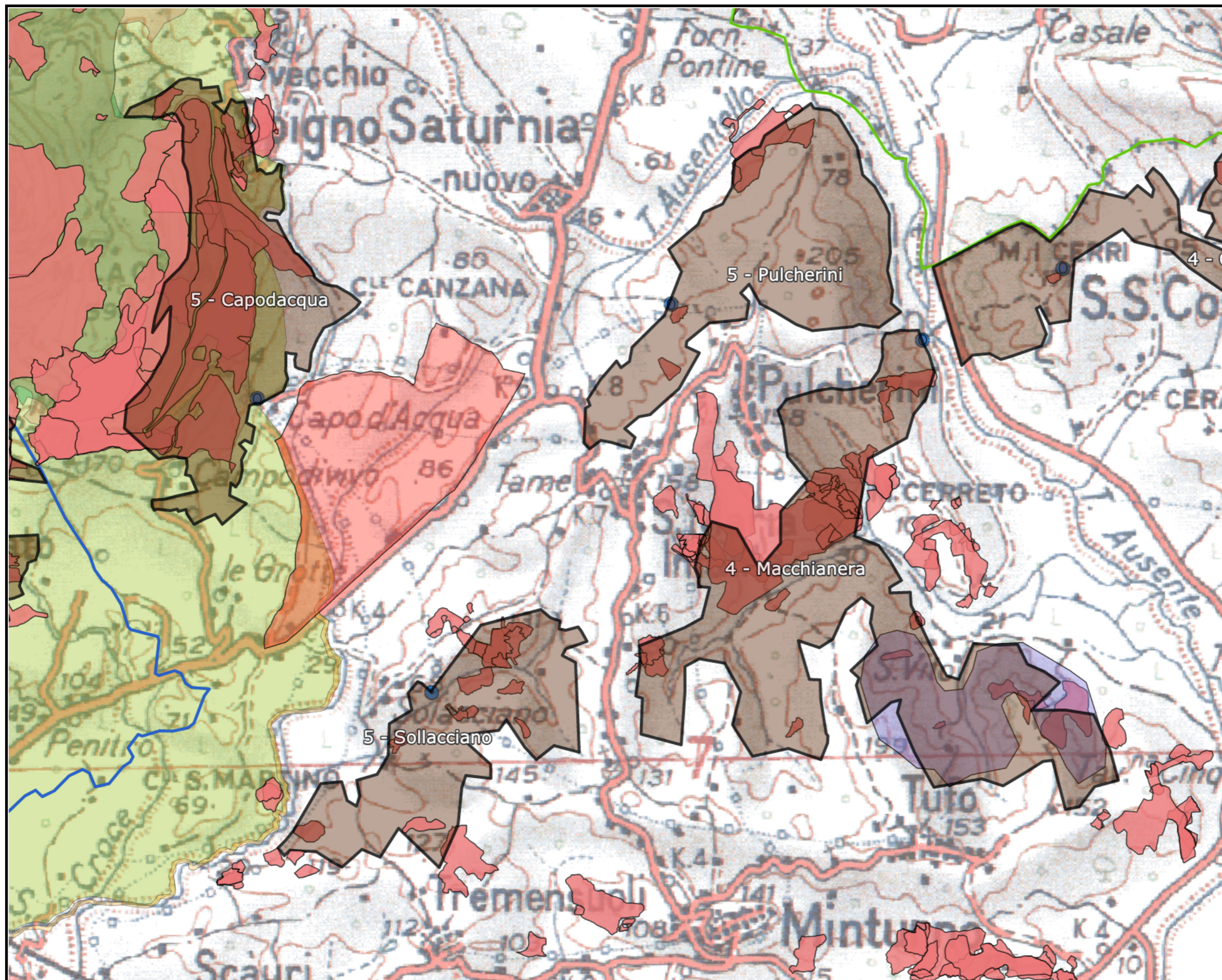
-  IBA
-  RAMSAR
-  EUAP (PARCHI)
-  ZPS
-  SIC-ZSC
-  CONFINI
-  ZRV
-  Zone Caccia Selezione
-  Zona Girata
-  Parco Naturale Regionale
-  Incendi 2009
-  Incendi 2010
-  Incendi 2011
-  Incendi 2012
-  Incendi 2013
-  Incendi 2014
-  Incendi 2015
-  Incendi 2016
-  Incendi 2017
-  Incendi 2018
-  Distretto 4
-  Distretto 3
-  Distretto 2
-  Distretto 1
-  Aree ritrovo
-  Aree cinghiali
-  Punti di ritrovo

Scala 1:25.000





# SISTEMA INFORMATIVO ATC LATINA 2

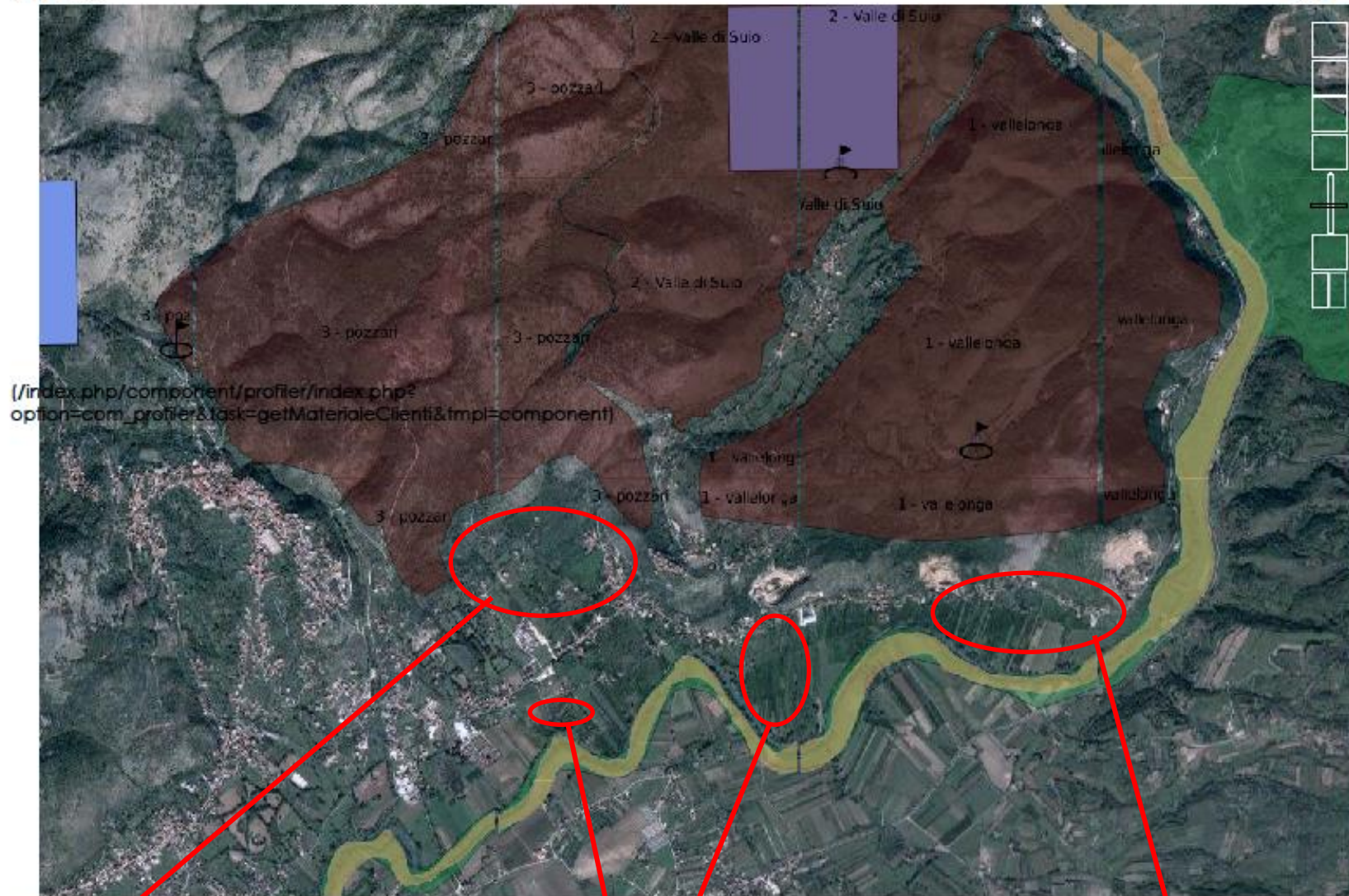


## Legenda

- IBA
- RAMSAR
- EUAP (PARCHI)
- ZPS
- SIC-ZSC
- CONFINI
- Zone Caccia Selezione
- ZRV
- Incendi 2011
- Distretto 1
- Incendi 2014
- Incendi 2015
- Distretto 2
- Distretto 3
- Incendi 2012
- Punti di ritrovo
- Distretto 4
- Incendi 2016
- Incendi 2017
- Incendi 2010
- Monitoraggio beccacce
- Parco Naturale Regionale
- Incendi 2013
- Aree ritrovo
- Zona Girata
- Incendi 2009
- Aree cinghiali
- Incendi 2018

Scala 1:25.000





Montepecoriello e Rio Palombara

Limata

Campo di Rito